

**TEST CONDITIONS**

Test Date	1/19/2023
Test Conductor	Travis Hayes
Boat Weight as Tested (lbs.)	14500
Air Temperature (degrees F)	55
Elevation (ft)	0
Sea State	Calm
Wind Velocity range (mph)	2
Fresh/Salt Water	Brackish
Fuel Level at Testing (gal)	250

**ENGINE SPECIFICATIONS**

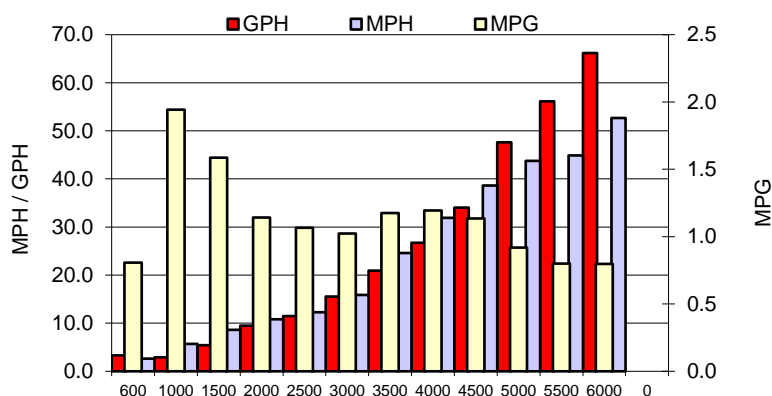
Number of Engines	2
Engine	V10 Verado
Horsepower	400
Cylinders	10
Drive or gear model and ratio	HD Camber 2.08
Mounting Bolt Hole	3,3
Engine Height (in)	2.5,2.5
Engine Setback (in)	14.0,14.0
Engine Length (in)	25,25

**PERFORMANCE SUMMARY**

Top Speed (mph @ rpm)	53	6138
Acceleration 0 - 20 mph (seconds)	4.3	
Acceleration 0 - 30 mph (seconds)	6.7	

**PROPELLER SPECIFICATIONS**

Mercury Name	Rev X
Material	Stainless Steel
Pitch	22.0,22.0
Number of Blades	4

**PERFORMANCE CURVE**

**BOAT SPECIFICATIONS**

Region/s sold	
Manufacturer	MJM
Website	
Boat Model	35
Boat Type	Cruiser
Material	Adv Composite
Length (ft)	37.9
Beam (ft)	11
Max hp Capacity	Yatch Cert
Fuel Tank Capacity (gal)	250
Steering Type	Joystick
Dry Boat Weight (lbs.)	11000

**PERFORMANCE DATA**

RPM	SPEED	FUEL CONSUMPTION	FUEL CONSUMPTION	RANGE
RANGE	MPH	GPH	MPG	MILES
600	2.6	3.3	0.8	202
1000	5.7	2.9	1.9	486
1500	8.6	5.5	1.6	397
2000	10.8	9.5	1.1	286
2500	12.3	11.5	1.1	267
3000	15.9	15.5	1.0	256
3500	24.6	20.9	1.2	294
4000	31.9	26.7	1.2	299
4500	38.6	34.0	1.1	284
5000	43.7	47.6	0.9	230
5500	44.9	56.2	0.8	200
6000	52.7	66.2	0.8	199
0	0.0	0.0	0.0	0
0	0.0	0.0	0.0	0