



McMICHAEL
YACHT BROKERS & YACHT YARDS

MICHAEL BEERS
McMichael Yacht Brokers
447 East Boston Post Road
Mamaroneck, NY, US
Office: 914-381-5900
Mobile: 718-764-7215
michaelb@mcmyacht.com



1997 Beneteau Oceanis 461

Boat Type: Cruiser

Address: Mamaroneck, NY, US

Price: \$125,000



OVERVIEW

PRICE REDUCTION!

Excellent value for a spacious, modern family cruising boat with great performance from an easily handled sail plan!

This three cabin/two head 461 looks fantastic with her Flag Blue Awlgrip and updated canvas package. Bottom has been stripped, barrier-coated and ablative paint re-applied. Full electronics, brand new inverter/charger, upgraded solar and a recent survey. This is the one to buy!

On display at our yard. All photos taken August/Sept 2018.

SPECIFICATIONS

Basic Information

Manufacturer:	Beneteau	Vessel Name:	4305 MB
Model:	Oceanis 461	Boat Type:	Cruiser
Year:	1997	Hull Material:	Fiberglass
Category:	Sail	Hull Type:	
Condition:	Used	Hull Color:	
Location:	Mamaroneck, NY, US	Designer:	
Available for sale in U.S. waters:	Yes	Flag of Registry:	

Dimensions & Weight

Length:	46 ft - 14.02 meter	Draft - max:	5 ft 9 in - 1.75 meter
LOA:	46 ft 5 in - 14.15 meter	Bridge Clearance:	-
Beam:	13 ft 11 in - 4.24 meter	Dry Weight:	-

Engine

Make:	Volvo	Engine Type:	Inboard
Model:	TMD 22	Drive Type:	
Engine(s):	1	Fuel Type:	Diesel
Hours:	-	Horsepower:	77 (Individual), 77 (combined)
Cruise Speed:	9 MPH	Max Speed:	10 MPH
Range:	-	Joystick Control:	No

Tank Capacities

Fuel Tank:	53 gallons - 1 tank(s)	Holding Tank:	-
Fresh Water Tank:	45 gallons - 3 tank(s)		

Accommodations

Total Cabins:	3	Crew Cabins:	-
Total Berths:	4	Crew Berths:	-
Total Sleeps:	-	Crew Sleeps:	-
Total Heads:	2	Crew Heads:	-
Captains Cabin:	-		

DESCRIPTIONS

Accommodations

Three cabin, two head layout ideal for cruising with family and friends. The cherry interior has a high-gloss finish; navy blue upholstery is in great condition. Light and ventilation is provided by 7 opening overhead hatches and 12 opening portholes, in addition to air conditioning. Hatches and port have sun shades.

Owners cabin is forward with 7+ foot full size partial island berth. Short settee and large hanging locker to port. Flat-screen TV/DVD player on swivel mount. To starboard is small storage locker and en-suite head with shower. Air conditioning/heat and multiple opening hatches with integral sun shades.

Moving aft, the long galley is to port and features dark blue Corian countertops, microwave, stainless steel double sink, 3-burner propane stove/oven, and 12 volt top loading refrigerator and freezer.

Large settee is on centerline and creates a leaning post/handhold while working in the galley at sea, with storage beneath. Large u-shaped dinette is to starboard with storage outboard.

A proper forward-facing navigation station is aft to port, with storage inside and beneath the chart table and additional storage under nav seat. A new (August 2018) inverter/charger is installed under the nav seat, and a flat screen TV on swivel mount is installed above.

Opposite to port is a large head/shower, accessible from the salon or the aft cabin.

The vessel has two aft cabins of equal size, each suitable for an adult couple with adequate storage, ventilation, and reading lights.

Cockpit

Spacious cockpit with fixed table/folding leaves, dodger, bimini and connector. Fold-down centerline section allows for a walk-thru transom to the spacious swim platform with ladder and hot/cold shower.

Helm station with instruments, GPS/radar and autopilot controls in pod, and primary winches within easy reach.

Furling lines for main (in-mast) and jib are lead to the coachroof through clutches. Port side winch is electric.

Full cockpit cushions in navy blue Sunbrella. Cockpit sole, swim platform and benches in teak. Storage in two deep seat lockers (port starboard), with additional lazarette to starboard and propane locker (two tanks) to port.

Electronics

Raymarine E80 Chartplotter at helm

Raymarine Radar on mast (48 nm range)

Raymarine X30 SmartPilot autopilot with ST7002 control head

Raymarine wind, speed, depth displays at helm

Standard Horizon Eclipse VHF

Electrical System

12-volt system:

2 x 4D batteries

3 x 403E batteries

1 x G24 engine battery

Rigid solar panels port/starboard, approximately 110 watts

Twin engine alternators

110-volt system:

Xantrex 100 amp battery charger/inverter (new, August 2018)

Two 30-amp inlets at transom, two redundant inlets in anchor locker

Two shore power cords

Sails, Rigging and Canvas

Masthead sloop, aluminum, keel-stepped with twin spreaders and inner stay

Spin pole on mast with topping lift and car system

1x19 stainless wire shrouds/stays

Backstay splits to allow for walk-thru transom

In-mast furling

Rigid vang with 4:1 purchase

Harken roller-furling headsail

Lewmar 44 electric winch on cabin top, port (starboard 44 is manual)

Lewmar 54 self-tailing two speed primaries

Adjustable genoa track leads

Traveler

UK Tape Drive genoa with UV leech in good condition

UK Tape Drive main in good condition

Dodger, bimini and connector piece in good condition

Cockpit cushions

Additional Equipment

Cruisair 15k BUT air conditioning w/ reverse cycle heat for salon/fwd cabin

Lewmar electric windlass with handheld remote; washdown at anchor locker

Xantrex Freedom inverter/charger, 100 amp/2000 watt (new in 2018)

Refrigerator/freezer 12v, toploading

Jabasco electric-flush heads

10 gallon hot water tank (via engine or 120 volt shore power)

line cutter on prop shaft

feathering 3-blade propeller

TV antenna for mast

manuals and spares

cleaning products, brushes, boat hook

PFD's

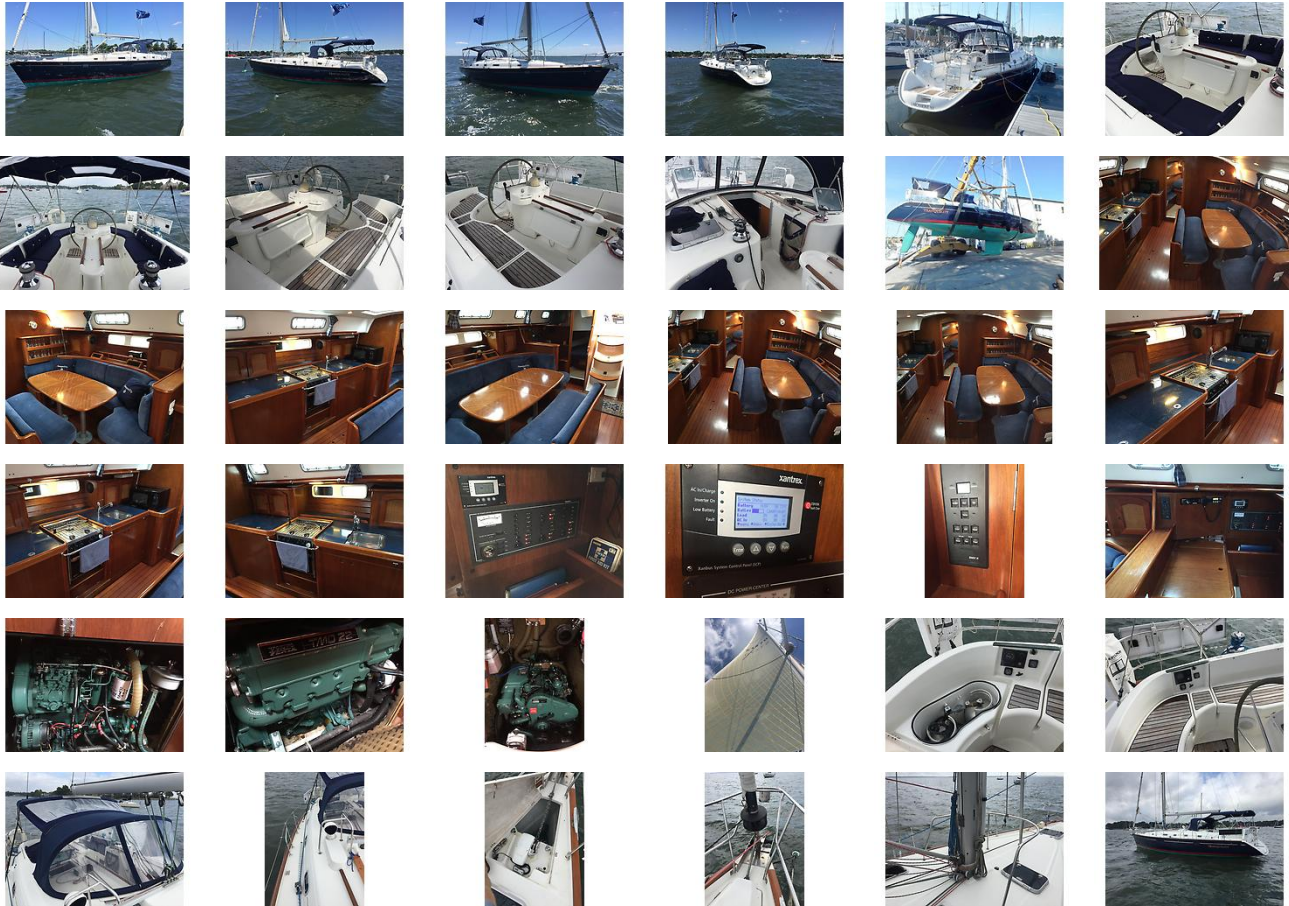
Reason for Selling

Traded in on larger vessel

Disclaimer

The Company offers the details of this vessel in good faith but cannot guarantee or warrant the accuracy of this information nor warrant the condition of the vessel. A buyer should instruct his agents, or his surveyors, to investigate such details as the buyer desires validated. This vessel is offered subject to prior sale, price change, or withdrawal without notice.

GALLERY



LOCATION MAP



McMICHAEL
YACHT BROKERS & YACHT YARDS

MICHAEL BEERS
McMichael Yacht Brokers
447 East Boston Post Road
Mamaroneck, NY, US
Office: 914-381-5900
Mobile: 718-764-7215
michaelb@mcmyacht.com

